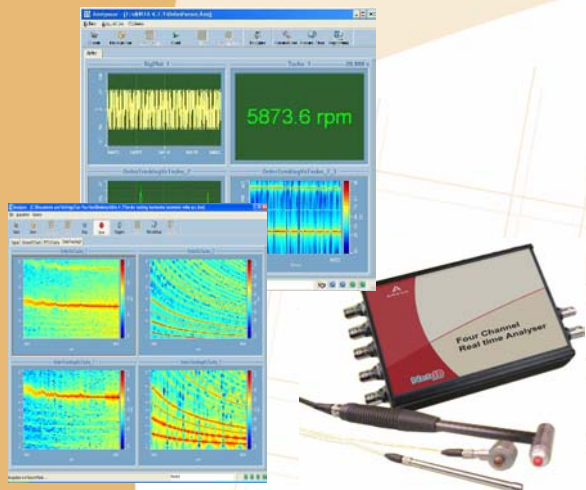




Full Performance 4ch Analyzer for using anywhere!



dBFA Suite along with a most compact 4+1 channel USB-II data acquisition unit makes **PRO-117-EXT** a quite unique high resolution measurement system:

- 4 channels 24 bit DAQ (DC-20 kHz Full Frequency range) plus Tacho and Ext. Trigger inputs
- Parallel Real time processing and recording
- Applications oriented processing tools
- Data Import/Export capabilities
- TCP/IP commands on open Software platform for custom development

Your ideal Sound & Vibration analyzer on the field!

PRO-117/EXT

Key Features...

Hardware Platform

- ▶ 4 simultaneous, 24-bit Delta-Sigma over 52kHz A/D channels
- ▶ Support for four IEPE inputs, including 4mA AC or DC coupling
- ▶ Current source
- ▶ Portable operation. No external power supply needed. Runs on USB power
- ▶ Tachometer input support in the A/D data stream for synchronizing measurements
 - ▶ Sampling rate of over 52kHz to meet your application needs
- ▶ Programmable triggers: software, TTL, analog threshold

A complete set of Software tools

- ▶ Simultaneous real-time multi-analysis as:
 - ▶ Averaged and multi-spectra with FFT and 1/1 down to 1/48 octave
 - ▶ Cross-spectra, Statistics...
- ▶ Advanced software package for:
 - ▶ Frequency Response Functions,
 - ▶ Order analysis (option),
 - ▶ Transient & Impact Testing analysis (option)
- ▶ Application oriented post-processing functions with analysis scripts
- ▶ Transducers Database management: Sensors, calibrators, calibration history,...
- ▶ Data Import/Export: ASCII, UFF58, Wave, nCODE, Matlab™, MeScope, mp3, SDF, ASAM/ODS, SONY, TEAC (Digital format)
- ▶ Bi-directional link to Matlab™ and compatibility with Office software suite
- ▶ Automatic reporting capabilities from real-time and post-processing modules

Options

- ▶ RPM recording and Order analysis
- ▶ Sound Imaging and Mapping
- ▶ Sound Quality and Sound Perception

A full range of Applications in:

Automotive

Aeronautics

Railway

Mechanics

Materials

Construction
Machines

Building industry

Electric appliances/IT
Household appliances

Telecommunications

PRO-117/E Technical Specifications

Features	PRO-117/EXT	Features	PRO-117/EXT
Hardware Analog input channels: 4, single ended, simultaneous Channel input connectors: BNC with high rigidity frame Analog output channels: 1 (BNC connector) Digitization: 24 bits linear Maximum Sampling Rate: 52.734kHz Minimum Sampling Rate: 195.3Hz Tacho channels: 1 (31 bits) Maximum Input Frequency: 380kHz		Environmental Operating temperature: 0°C to 55°C Storage temperature: -25 to 85°C Humidity: 95% RH (no condensation) Altitude: Up to 10000 feet EMI: FCC Part 15, EN55022:1994 +A1:1995+A2:1997 VCCI, AS/NZS 3548 Class A Immunity: EN 61000-6.1:2001	
Analog input/output Characteristics Input impedance: 1MΩ Input range: 10V rms (-15V to +15V), 1V rms (-1.5V to +1.5V) Maximum allowable voltage: ±20V (power off), ±30V (power on) Overvoltage protection: ±40V Sensor power supply: IEPE Dynamic range: 106dB THD: -90dB typically External trigger: BNC connector Trigger logic family: LVTTTL inputs Output Range: ±10V		Physical Dimensions: 100mm(W) x 18mm(H) x 190mm(D) excluding projections Weight: 491g Power supply Power, +5V: ±5V @0.5A	

Features	PRO-117/EXT
Software dBFA Suite (Recorder - Analyzer - Post-Processing):	<ul style="list-style-type: none"> Simultaneous signal recording and real-time multiprocessing and monitoring, post processing analysis (Average 1/n octave, 1/n octave vs. time, Average FFT, FFT vs. Time, FRF...) Calculation on spectra and signals, Color spectrogram and waterfall, Tacho acquisition, Signal edition, Import of Teac/Sony files... Reporting Module. Analyzer and post-processing option
Software options (included in PRO-117/EXT-A):	<ul style="list-style-type: none"> RT Automation (User-defined sequential acquisition procedure); Transient / Impact mode: Coordinates management, user defined windowing, Me' scope format export, Reporting Module both in Analyzer and post-processing; MATLAB communicator in Post-processing Order (Analysis and Tracking in Real Time and post-processing) Time-Frequency Transforms, De-noising, Convolution (Post Processing on signals)

Ordering Information:

USB-II-EXT: 4+1ch data acquisition front-end, AC/DC/IEPE inputs, 1

SFA4050000: Software dBFA Recorder - Analyzer - Post-Processing: simultaneous signal recording and real-time multiprocessing and monitoring, post processing analysis (Average 1/n octave, 1/n octave vs. time, Average FFT, FFT vs. Time, FRF...), calculation on spectra and signals, color spectrogram and waterfall, tacho acquisition, signal edition, import of Teac/Sony files....

Options (included in PRO-117/EXT-A):

SFA4060000: RT Automation

SFA4061000: Transient / Impact mode

SFA4022000: MATLAB communicator

SFA4044000: Order Analysis and Tracking

SFA4038000: Time-Frequency Transforms, Denoising, Convolution... **Data format:** CMG documented, UFF, MatLab, WAV, ASCII.

The presented characteristics are subject to change without notice. Rev:03/2007

01db-Metravib

200, Chemin des ormeaux
 F-69578 Limonest Cedex
 Tel.: +33 (0)4 72 52 48 00
 Fax.: +33 (0)4 72 52 47 47

nvh@01db-metravib.com
 www.01db-metravib.com

